

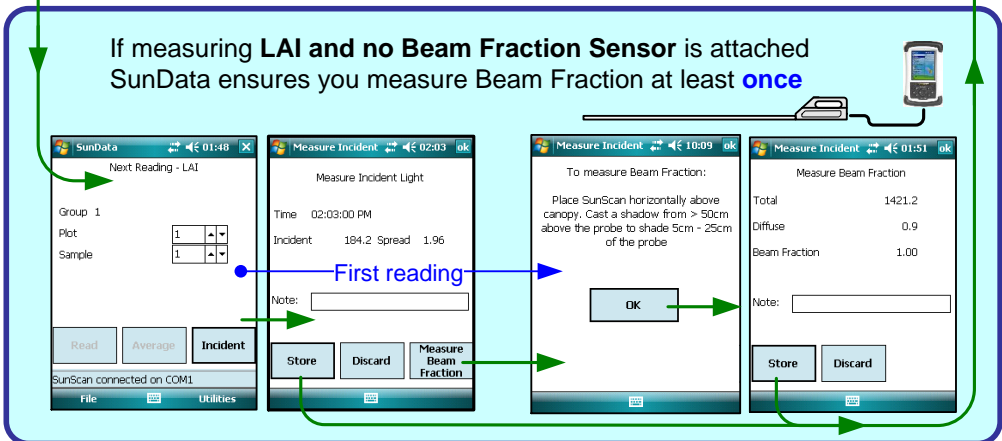
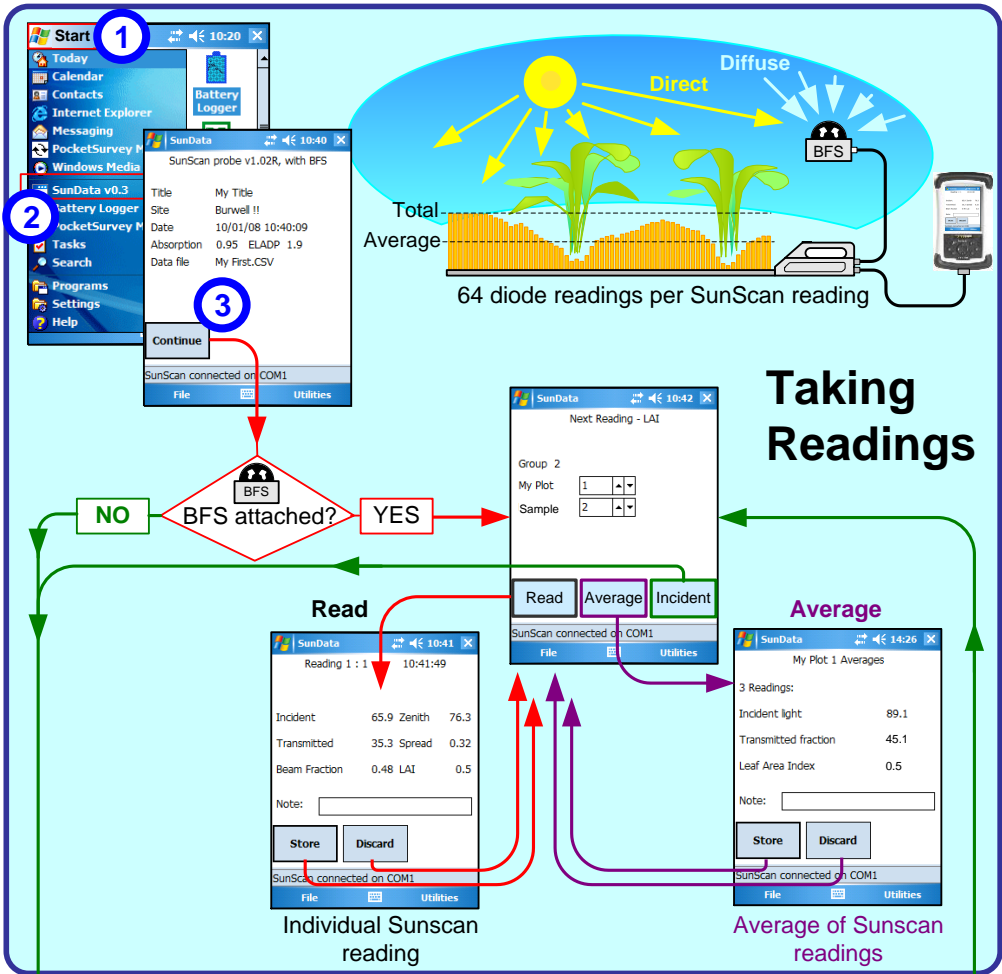
SS1 SunScan

Canopy Analysis System

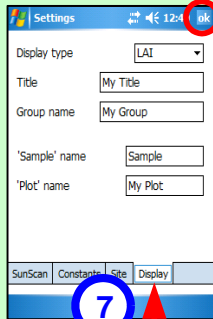
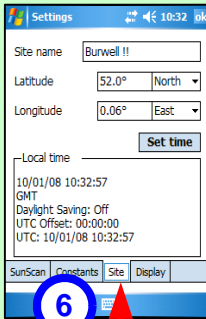
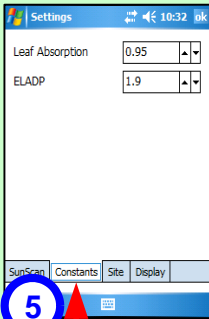
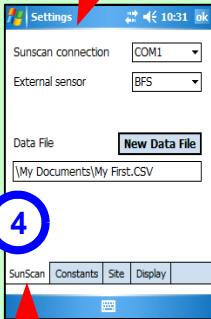
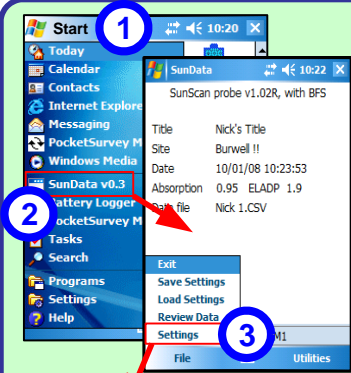
Quick Start Guide *Version 3.1*



AT *Delta-T Devices Ltd*



Example: Set up to measure Leaf Area Index



Set PDA COM port.
Declare if BFS sensor connected.
Create a new data file.

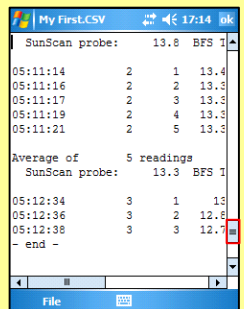
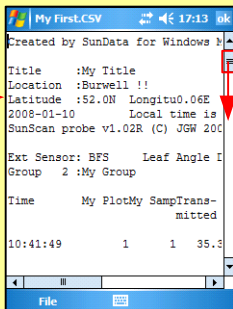
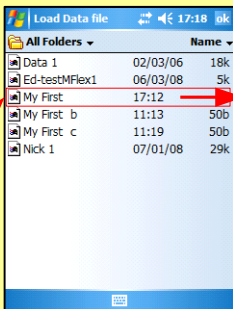
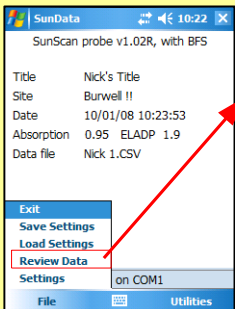
Specify Leaf Area Index Constants

Specify the Site and set the time

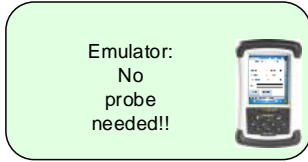
Display type: select LAI, PAR or All (64 individual readings).
Title, Group, Sample and Plot names are optional

Review Data

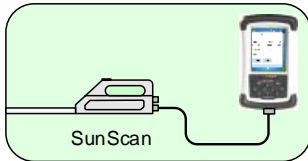
Load file and scroll



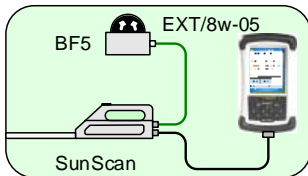
Possible SunScan System Combinations



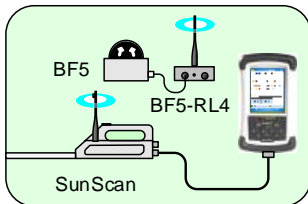
In Emulator mode the PDA running SunData software can simulate SunScan and BF5 sensor



SunScan SS1 + PDA running SunData



SunScan SS1 + BF5 + PDA running SunData



Radio version: SunScan SS1-RL4 + BF5 + BF5-RL4 + PDA running SunData

SunScan Parts

| | | |
|--|-----------|---|
| | SS1 | SunScan probe no radio |
| | SDA2 | SunData software for Windows Mobile |
| | RPDA-1 | Ruggedised PDA running Windows Mobile 5 or 6 |
| | BF5 | Sunshine Sensor |
| | BF5-RL4 | Radio transmitter for BF5 links to SS1-RL4 |
| | SS1-RL4 | SunScan Probe + radio receiver (434 MHz) links to BF5-RL4 |
| | SS-TD | Telescopic tripod for BF5 |
| | SS-HB1 | Holster Belt for PDA and Sunscan |
| | SS-PC1 | PDA carry case |
| | SCC1 | Carry case for SunScan system |
| | EXT/8w-05 | BF5 to SunScan cable |
| | EXT/8w-xx | BF5 to SS1 extension cable, x = 5, 10 or 25 m |



Delta-T Devices Ltd
130 Low Road, Burwell
Cambridge CB25 0EJ
UK

Tel: +44 1638 742922
Fax: +44 1638 743155
e-mail: sales@delta-t.co.uk
tech.support@delta-t.co.uk
web: www.delta-t.co.uk